

F

Wiking

FDI Type Foundry



1925

Heinz König · J.D. Trennert & Sohn

2020

Ralf Herrmann · FDI Type Foundry

Font Family

FDI Wiking

Designer

Heinz König, Ralf Herrmann

Released

2020

Styles

1

Script Support

Latin, Western/Central/Eastern

Maschinenfaal

Frühjahr

Buchdruckerei

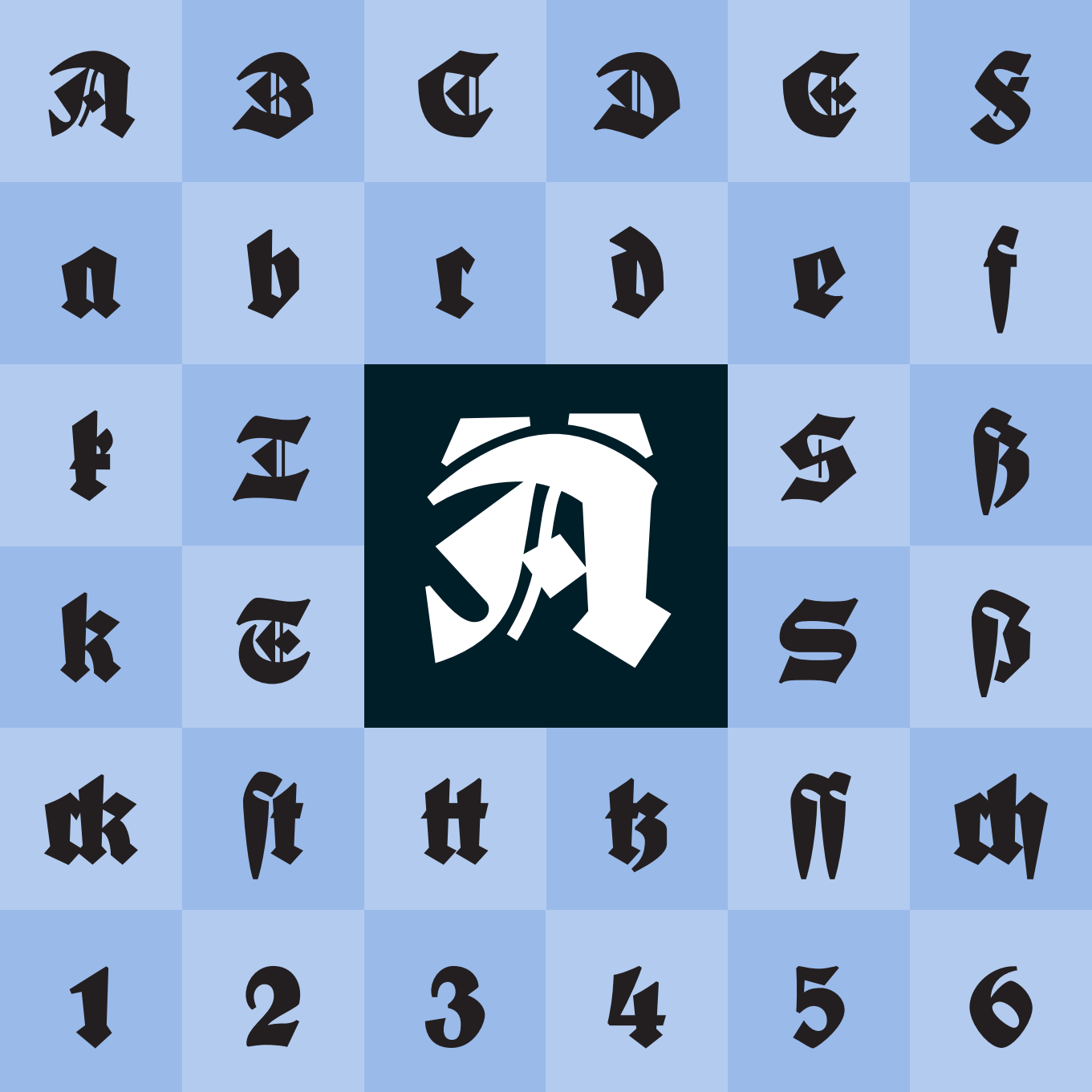
Kraftwagen

Miles Davis

The Jukebox

Rhapsody in blue

Charleston



FDI WIKING



Thüringen

Schriftgießerei

Damenmode

Bärenmarke

The Jazz Age

Buck Rogers

Golden Twenties

Radio Station

A close-up, cinematic shot of a character, likely a dwarf or a warrior, with a thick, grey beard and a fur-trimmed hood. The character is wearing a metal gauntlet on their right hand, which is resting on a dark, curved object. The background is dark and textured, with some light reflecting off the character's face and the fur. The word "Siffringer" is overlaid in a large, white, stylized font across the center of the image.

Siffringer

A B C D E F G H I

J K L M N O P Q R

S T U V W X Y Z

a b c d e f g h i j k l m n

o p q r s t u v w x y z

1 2 3 4 5 6 7 8 9 0

FDI Wiking · default glyphs

A B C D E F G H I

J K L M N O P Q R

S T U V W X Y Z

a b c d e f g h i j k l m n

o p q r s t u v w x y z

1 2 3 4 5 6 7 8 9 0

FDI Wiking · traditional glyphs (Stylistic Set 1)

Made possible by the generous support of
these Kickstarter supporters:

Akira Y. ♦ Alex ♦ Alexey G.
André M. ♦ Anne W. ♦ André U.
Dallas R. ♦ Stefan S. ♦ Eckhard P.
Eric S. ♦ Erik S. ♦ Fernando D.
Slienger ♦ Frank L. ♦ Gunnar P.
Gregory K. ♦ Grischka P. ♦ Gunnar L.
Günter S. ♦ Gunther S. ♦ Hans S.
Hans-Ulrich K. ♦ Harald C. ♦ Helmut H.
Henning L. ♦ Holger J. ♦ Hylbrand-J. H.
Hia W. ♦ Jan-S. Stieler ♦ Jeffrey D.

Jens M. ♦ JJ Y. ♦ Joachim M.
Johannes E. ♦ Johnny C. ♦ Joumana M.
Karly M. ♦ Klaus S. ♦ Louis R.
Maik-S. G. ♦ Robert M. S. ♦ Marcel A.
Masaki M. ♦ Michael A. ♦ Michael B.
Michael W. ♦ Monika G. ♦ Nicole P.
Norbert M. ♦ Patricio H. ♦ Paul M.
Pedro E. ♦ Philipp P. ♦ Pöikworks
Riccardo S. ♦ Rob S. ♦ Spremi
Stefan S. ♦ Swedish Z. ♦ Tamara L.
Thomas K. ♦ Thomas L. ♦ Thomas R.
Till ♦ Ulrich D. ♦ Wurstvogel
Xavier S. ♦ Ysae

A Á Â Ã Ä Å Æ B
 C Č Ć Ğ Ĩ J Ñ Ò Ó Ô Õ Ö
 Ě Ė Ę Ě Ğ S Š Œ Ø Ñ Š Ž
 ı ſ ſ ſ ſ ſ ſ ſ ſ ſ ſ ſ ſ
 ſ ſ ſ ſ ſ ſ ſ ſ ſ ſ ſ ſ ſ
 ſ ſ ſ ſ ſ ſ ſ ſ ſ ſ ſ ſ ſ
 ſ ſ ſ ſ ſ ſ ſ ſ ſ ſ ſ ſ ſ
 ſ ſ ſ ſ ſ ſ ſ ſ ſ ſ ſ ſ ſ
 ſ ſ ſ ſ ſ ſ ſ ſ ſ ſ ſ ſ ſ

Wiking · uppercase (default set)

a á â ã ä å æ b
 c č ċ ğ ĩ j ñ ò ó ô õ ö
 ě ė ě ě ğ f g ğ ğ ğ h h i
 ı í î ï ï ï ï ï ï k k l l l
 t m n n ñ n n ñ o ó ô õ
 ò õ õ ø õ œ p p q r é ě ğ
 s š š š š š ß ſ t t t t t t u ú
 û ü ù ů ů ů ů v w w w w
 w x y y y y y z z z z z

Wiking · lowercase (default set)

Northern Lights



1 2 3 4 5 6 7 8 9 0

1 2 3 1/4 1/2 3/4

* / \ . ♦ ♦ ▶ ... ! ⓘ # . ? ¿

“{ } () = - - - -

¢ ¤ \$ € £ ¥

Figures, Punctuation, Currencies

≈ ~ ÷ = > < ≥ ≤

— × ≠ % ∞ + ± | ! ¶

© ® § ¶

Q D 3M O ^

◀ ▶ ↺ 🔍 ⌂

64

Math, Miscellaneous, Diacritical Marks

Polonis

discretionary ligatures:

ch ck ef ff fi fl

ft it ii if tt tz th

stylistic set 2

S S

stylistic set 3

T I

stylistic set 4

B B

Usage tip: Blackletter
fonts are only intended
for mixed-case
typesetting.

PLEASE DON'T!
This is fine.

For traditional German
blackletter texts, turn on
both the stylistic set 1 and
discretionary ligatures:
Bäckererei (before)
Bâckerei (after)



fdi-type.de